

Custom Line 120'

CUSTOM LINE

Custom Line 120'

Beyond the line.

Some people stop at the superficial;
we strive to go beyond.

Because only those who cruise
know where to find the sublime:
Beyond the surface.

Beyond the Line.

See another sea with
the **Custom Line 120'**.

A reflection of the owner's personality,
she's more than a yacht;
she's a unique masterpiece.
Because cruising is an art.
The art of being different.



Some
people see
a wake;



we see
a masterpiece.







Feel the calmness
of the sea or express
the power in the waves.





Speed

25 knots

maximum speed

21 knots

cruising speed

1100 nm

range at 11 knots

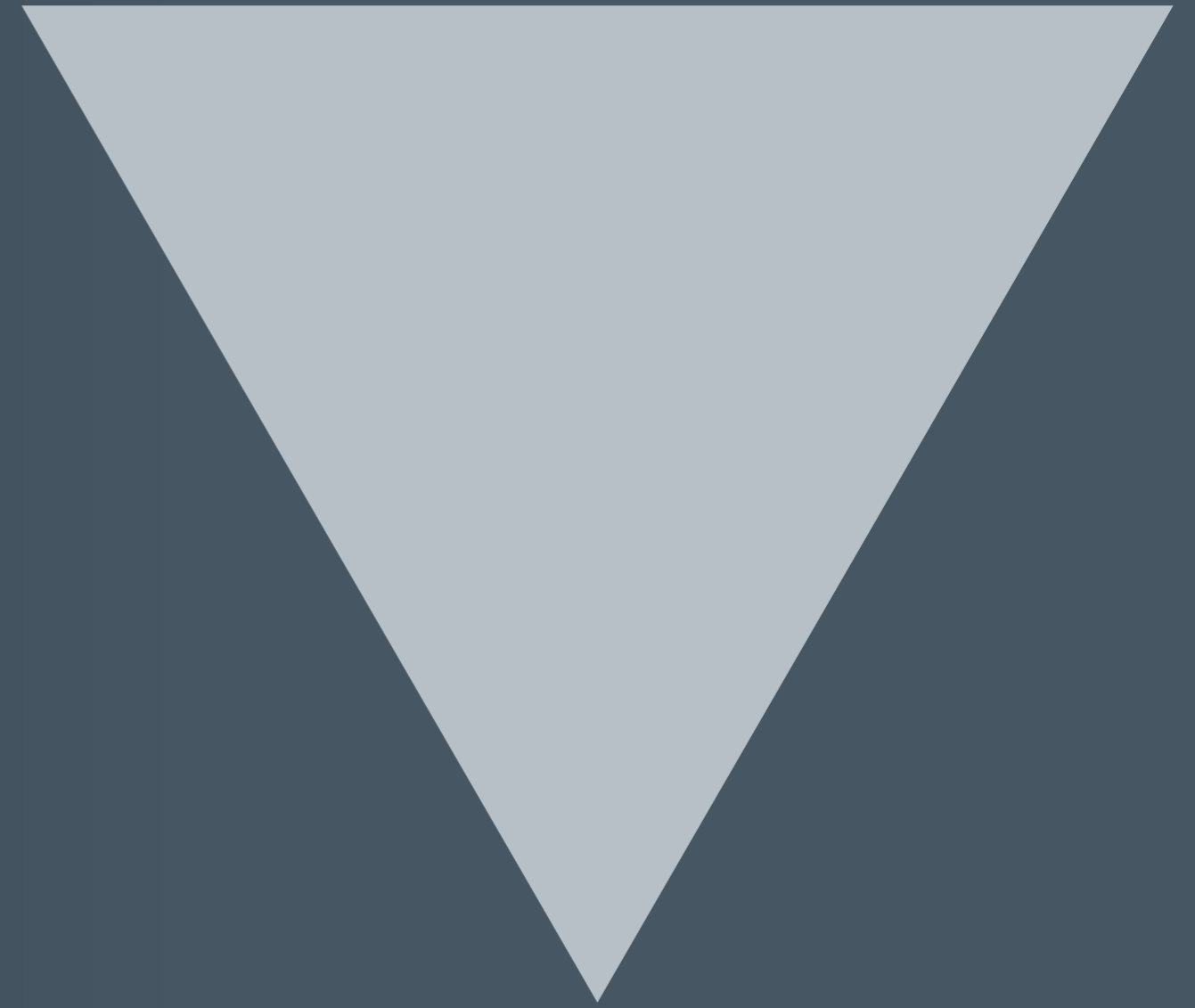
An array of navigation systems to free your mind and let your spirit soar on the high seas.



The art of cruising
comes to life with
the Custom Line 120' yacht.



**Some
people see
a mirror;**



we see a unique
creation.





Dimensions

38.36 meters

overall length

7.65 meters

maximum beam

270

gross tonnage

There are palatial spaces
for everything from carefree
fun to well-earned privacy.

Beyond the harmony of the Line,
beyond expectations.
A true **yachting masterpiece**.







A tailor-made Line.
A Line **to live intensely.**



120': the shortest distance
**between the sea and
your dreams.**

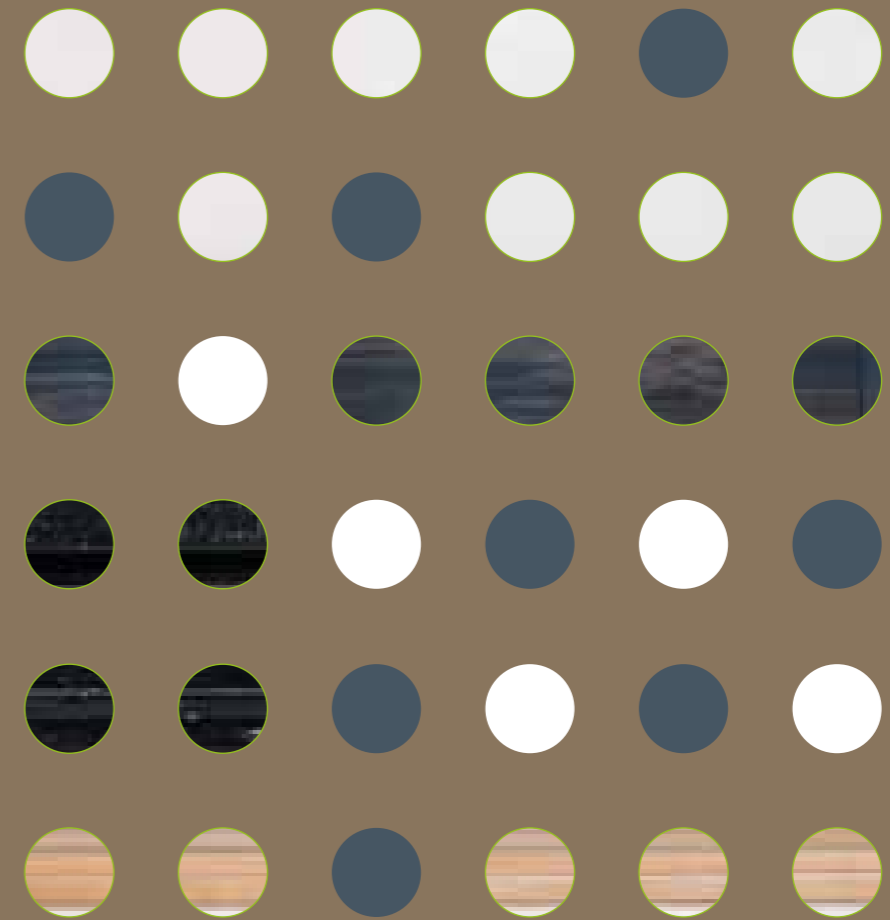




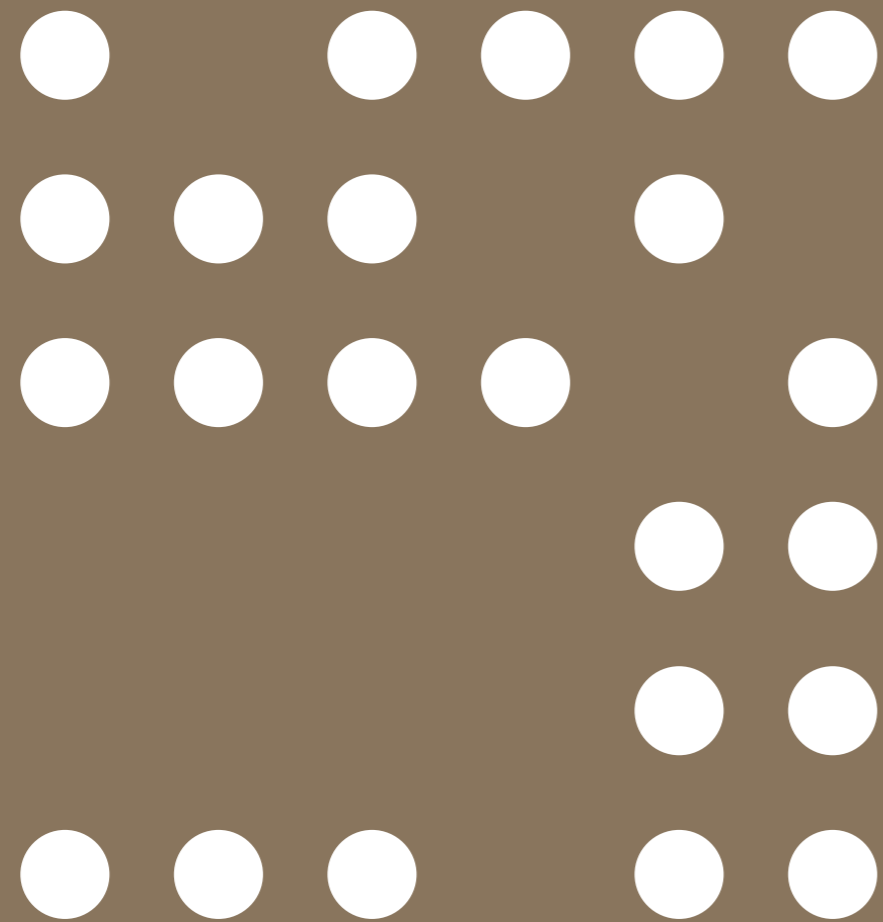


A **new Line**
on the horizon,
a new point
of reference
for your journey.

Some
people see
circles;



we see an incredible painting.





From creativity to creation.
Experience the sea through
widescreen windows.







From the main deck,
you **feel the infinity of
outer spaces.**

Traveling attracts.
Cruising captures the heart.





Amazing panoramic views

1

innovative large glass door on the main deck

3

decks with numerous hull windows and floor-to-ceiling windows

360°

view

See another sea, from the wraparound windows.

The black and white over the
blue, **a light in the deep sea.**



**Some
people see
a shape;**



we see a fantastic
sculpture.





Beyond the Line,
beyond the sea,
beyond the blue.





Like a modern high-tech art installation – **a masterpiece**, unique and unforgettable.



Key features

Innovative glass door angled at

45°

to create a single space spanning
more than

80

sqm

1

unique lounge floor commanding
unparalleled views of the sea

1

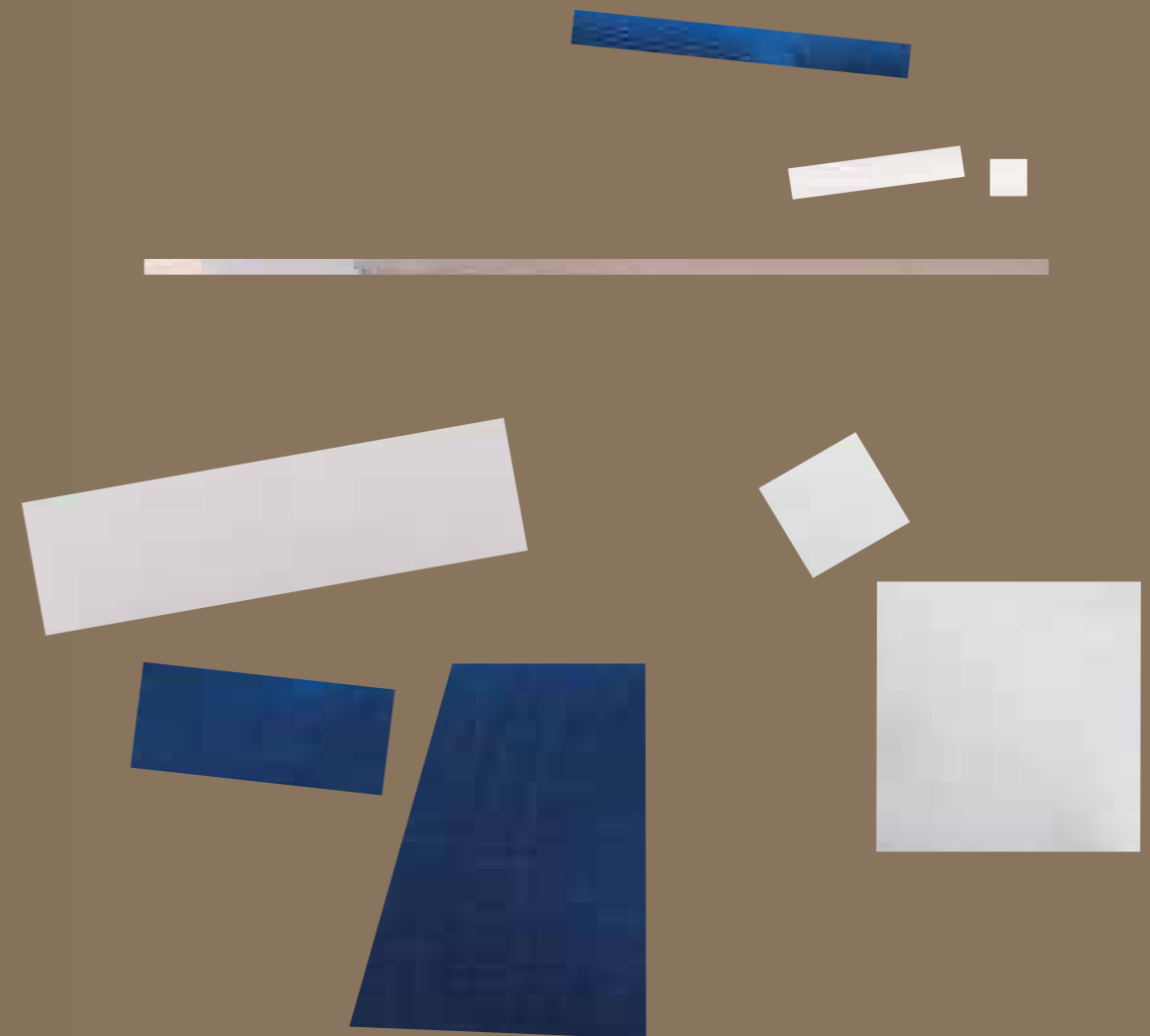
floodable float-in garage

Advanced technology
for spectacular cruising
in complete safety.





Some
people see
offcuts;



we see
a work of art.





Outdoor and indoor interior design

35 sqm

spacious owner's suite

4

VIP / guest cabins

1

beautiful outdoor lounge area

World-class craftsmanship
and tailor-made service
bring your dreams to life.







A journey to savor,
an experience to share
on board with family
and friends.





Large volumes of exquisite beauty.
Spaces with a story to tell.













Every detail is customizable.
Every detail is an **expression of you.**





Dati tecnici

Technical data

Datos técnicos

Технические характеристики

技术数据

البيانات الفنية

MOTORIZZAZIONE <p>2 x MTU 16V 2000 M96L potenza 2638 mhp / 1939 kW a 2450 giri/min</p>			
VELOCITA' (NODI) (REF. PERFORMANCE SPECIFICATIONS) <p>Velocità massima <p>Velocità di crociera <p>Velocità di crociera economica</p></p></p>			MTU 2638 <p>25 <p>21 <p>11</p></p></p>
AUTONOMIA (MIGLIA NAUTICHE) (REF. PERFORMANCE SPECIFICATIONS) <p>Velocità massima <p>Velocità di crociera <p>Velocità di crociera economica</p></p></p>			MTU 2638 <p>360 <p>420 <p>1100</p></p></p>
DIMENSIONI PRINCIPALI <p>Loa = Lunghezza fuori tutto ISO 8666 <p>Lh = Lunghezza di costruzione ISO 8666 <p>Lg = Lunghezza al galleggiamento (a pieno carico) <p>Larghezza massima <p>Immersione sotto le eliche (a pieno carico) <p>Dislocamento ad imbarcazione scarica e asciutta <p>Dislocamento a pieno carico <p>Stazza Lorda <p>Numero massimo di persone imbarcabili</p></p></p></p></p></p></p></p></p>	<p>38.36 <p>38.36 <p>31.40 <p>7.65 <p>2.18 <p>155.00 <p>180.00 <p>270</p></p></p></p></p></p></p></p>	<p>m/ft. in. <p>m/ft. in. <p>m/ft. in. <p>m/ft. in. <p>m/ft. in. <p>t/lbs <p>t/lbs <p>GT</p></p></p></p></p></p></p></p>	<p>125'10" <p>125'10" <p>103'0" <p>25'1" <p>7'2" <p>341717 <p>396832 <p>20</p></p></p></p></p></p></p></p>
Classificazione			RINA Class Certificate for Pleasure Yachts, C ✱ HULL, • MACH, Y, Unrestricted Navigation
DATI CARATTERISTICI <p>Tipo di carena: geometria variabile con pattini di sostentamento e deadrise <p>H massima = Altezza massima dalla chiglia all'hard top <p>H trasporto = Altezza minima per il trasporto dalla chiglia <p>Capacità serbatoi carburante (inclusa cassa giornaliera) <p>Capacità serbatoi acqua</p></p></p></p></p>	<p>12 <p>11.48 <p>9.22 <p>16300 <p>3000</p></p></p></p></p>	<p>° <p>m/ft. in. <p>m/ft. in. <p>lt./US gals. <p>lt./US gals.</p></p></p></p></p>	<p>37'8" <p>30'3" <p>4306 <p>793</p></p></p></p>
6 SPECIFICHE PRESTAZIONALI <p>i dati prestazionali sono stabiliti al seguente dislocamento: e si riferiscono alla barca nella versione STANDARD a 1/2 carico liquidi, con carena pulita, temp. 25° C, buone condizioni climatiche e 10 persone a bordo.</p>	164.00	t/lbs	362321
sovaccaricando la barca di: <p>si ha una perdita di velocità massima pari a: <p>L'autonomia diminuisce di conseguenza</p></p>	<p>6.0 <p>1</p></p>	<p>t/lbs <p>knot</p></p>	13228
Hull and propulsion design: Ferretti Group Engineering. <p>Superstructure and Interiors design: Studio Francesco Paszkowski Design.</p>			PRELIMINARY

ENGINES <p>2 x MTU 16V 2000 M96L power 2638 mhp / 1939 kW at 2450 rpm</p>			
SPEED (KNOTS) (REF. PERFORMANCE SPECIFICATIONS) <p>Maximum speed <p>Cruising speed <p>Economic cruising speed</p></p></p>			MTU 2638 <p>25 <p>21 <p>11</p></p></p>
RANGE (NAUTICAL MILES) (REF. PERFORMANCE SPECIFICATIONS) <p>Maximum speed <p>Cruising speed <p>Economic cruising speed</p></p></p>			MTU 2638 <p>360 <p>420 <p>1100</p></p></p>
MAIN SIZE <p>Loa = Overall length (standard ISO 8666) <p>Lh = Hull length (standard ISO 8666) <p>Lwl = Waterline length (boat fully laden) <p>Maximum beam <p>Depth under propellers (boat fully laden) <p>Displacement unladen <p>Displacement laden <p>Gross Tonnage <p>Maximum number of persons on board</p></p></p></p></p></p></p></p></p>	<p>38.36 <p>38.36 <p>31.40 <p>7.65 <p>2.18 <p>155.00 <p>180.00 <p>270</p></p></p></p></p></p></p></p>	<p>m/ft. in. <p>m/ft. in. <p>m/ft. in. <p>m/ft. in. <p>m/ft. in. <p>t/lbs <p>t/lbs <p>GT</p></p></p></p></p></p></p></p>	<p>125'10" <p>125'10" <p>103'0" <p>25'1" <p>7'2" <p>341717 <p>396832 <p>20</p></p></p></p></p></p></p></p>
Certification			RINA Class Certificate for Pleasure Yachts, C ✱ HULL, • MACH, Y, Unrestricted Navigation
TECHNICAL DATA <p>Hull type: warped hull with spray rails and aft deadrise <p>H = Overall height from keel to hard top <p>Ht = Minimum transport height from keel <p>Fuel tank capacity (daily tank included) <p>Water tanks capacity</p></p></p></p></p>	<p>12 <p>11.48 <p>9.22 <p>16300 <p>3000</p></p></p></p></p>	<p>° <p>m/ft. in. <p>m/ft. in. <p>lt./US gals. <p>lt./US gals.</p></p></p></p></p>	<p>37'8" <p>30'3" <p>4306 <p>793</p></p></p></p>
PERFORMANCE SPECIFICATIONS <p>The performance is estimated at the following conditions: standard version displacement of the yacht at half liquid load, clean hull, 25°C air temperature, good weather conditions, 10 persons on board.</p>	164.00	t/lbs	362321
Overloading the yacht by <p>top speed decreases of <p>Range will decrease accordingly</p></p>	<p>6.0 <p>1</p></p>	<p>t/lbs <p>knot</p></p>	13228
Hull and propulsion design: Ferretti Group Engineering. <p>Superstructure and Interiors design: Studio Francesco Paszkowski Design.</p>			PRELIMINARY



Profile



Fly Bridge



Raised Pilot House



Main deck



Lower deck




FERRETTIGROUP

LEGAL NOTICE

1. This brochure does not constitute an offer by the shipyard to any person under any circumstances whatsoever, nor may it be incorporated into any contract.

2. All the information in this brochure, including without limitation all technical and performance data, illustrations and drawings, has no contractual effect. That information refers to European standard models of motor yachts built by the shipyard and is accurate at the brochure's date of issue. The only valid technical description or reference content for an individual motor yacht is the exact specification stated at the time of purchase. Therefore, the only information that is binding on the seller is that contained in the sale agreement and associated manual. This brochure is based on information available at the date of issue. Notwithstanding Ferretti Group's best efforts to ensure accuracy, the information in this brochure may not cover all details or subsequent changes, nor does it claim to accurately foresee or detail all possible scenarios. Displays, photos, diagrams, designs or examples in this brochure are reproduced solely and exclusively to highlight the information contained. Each yacht is different, so the shipyard declines any and all liability for any use thereof on the basis of the information in this brochure.

3. The brochure and its contents must not be copied or reproduced in their entirety or in part.

4. Sale of this brochure is not permitted.

Technical drawings:

Studio Francesco Paszkowski Design
Ferretti Group Engineering

Concept and art direction:

Armando Testa

Photos:

Alberto Cocchi

FERRETTI S.P.A.

Via Ansaldo, 7 · 47122 – Forlì, Italy
Tel. +39.0543.787.511

FERRETTI GROUP SUPERYACHT YARD – CUSTOM LINE

Via Enrico Mattei, 26 · 60125 – Ancona, Italy

customline-yacht.com

CUSTOM LINE

BEYOND THE LINE